

Compliance Bureau Overview

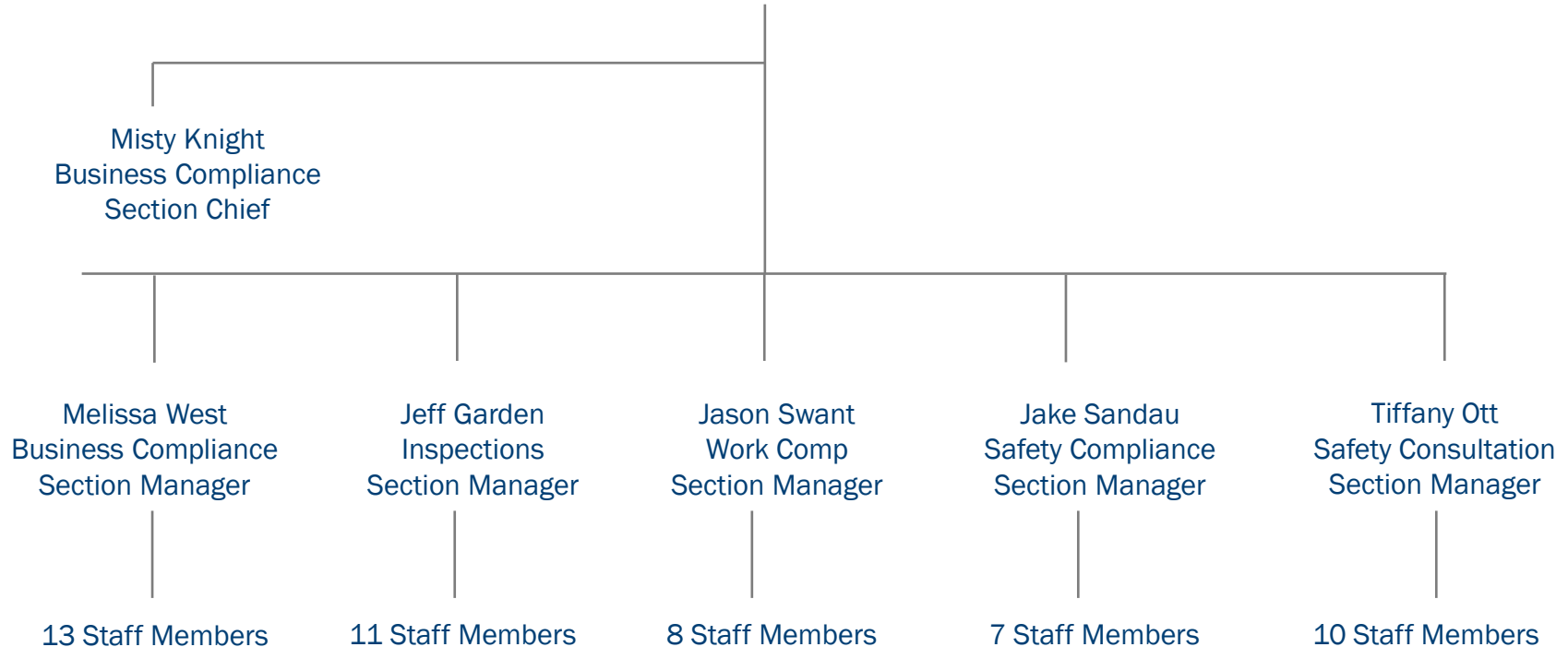
Presented by
Cindy Zimmerman



Montana Department of
LABOR & INDUSTRY

New Organizational Chart

Theresa McGowan-Sroczyk – Bureau Chief Compliance



Business Compliance Section

- Business Compliance For:
 - Wage Payments
 - Minimum Wage & Overtime
 - Prevailing Wage
 - Workers' Compensation
 - Working Relationships – IC's/Hiring Managers



Inspection Compliance Section

- Facility Inspections:
 - Salons/Barber Shops
 - Sanitation & Safety
 - Licensing requirements & scope of work
 - Funeral Homes/Crematory's/Cemetery's
 - Sanitation & Safety
 - Licensing requirements & scope of work
 - Death Records
 - Outfitters
 - Area of Operation: Camps, equipment, lodging facilities, livestock
 - Cranes
 - Proctor written & practical tests
 - On-site license checks of operators
 - Electrical/Plumbing
 - Licensing requirements – contractors, individuals & apprenticeship requirements
- Construction Contractors
 - Registered Contractors – Registration, WC & UI
 - Independent Contractors – Registration & working relationships
 - Prevailing Wage – Ensure employees are paid proper wage on jobsite



Workers' Compensation Section

Services Provided:

- Unemployed Employers Fund (UEF)
- Extra Territorial Agreements (ET's)
- Settlements & Orders
- Medical Regulations
- Plan 1 Assessments
- Attorney Agreements & Fees
- Claims Examiner Certification Program (CEC)
- 5yr Closure Process
- Subsequent Injury Fund (SIF)
- Governor's Conference



Safety Consultation & Compliance Sections

* Request Basis for Private Sector

* Non-Voluntary Basis for Public Sector (Inspections)

Services Provided:

- Workplace Hazards Assessments
 - Control & eliminate safety/health hazards
 - Comply with OSHA regs and MT Safety Culture Act
- Employee Sampling to Determine Workplace Exposure
 - Volatile organic compounds, silica, noise, metals, etc
- Indoor Air Quality (IAQ) Request
 - Industrial (shop, lab) VS non-industrial (office, library)
- Evaluation and Development of Safety & Health Programs
 - Written programs
 - OSHA mandated programs
- On-Site Consultations
 - Free of charge; 1 visit/year
- Review Injury/Illness Records
 - OSHA 300 logs
 - Determine injury/illness rates
- Safety & Health Training
- Safety Resources



Discussion

THERESA MCGOWAN-SROCZYK
COMPLIANCE BUREAU CHIEF
E-MAIL: TSROCZYK@MT.GOV
PHONE: (406) 444-1389

FOR MORE INFORMATION:

JASON SWANT, WORK COMP SECTION
E-MAIL: JSWANT@MT.GOV
PHONE: (406) 444-6451



Montana Department of
LABOR & INDUSTRY